



ELITE 3 TRUNKING SYSTEM

introduction

marco
cablemanagement



MARCO ELITE 3 TRUNKING IS ALSO AVAILABLE IN CHARCOAL AND LIGHT GREY FINISHES



MARCO ELITE 3 TRUNKING IS SUPPLIED WITH A PROTECTIVE FILM

Marco's new ELITE 3 data trunking system offers an innovative design solution for the growing data cabling market. At 175mm x 60mm, the symmetrical curved design allows for the installation of power and high density structured cabling systems including CAT5E, CAT6, Shielded, CAT7 and the new CAT6A 10 gig solution.

The high impact resistant uPVC means the trunking systems are both sturdy and robust and able to accommodate a greater number of cables. They are produced from the highest quality uPVC, providing an aesthetically pleasing pure white finish.

To allow for a quick and simple installation, the ELITE 3 base and internal walls are pre-punched, and a hinged lid has been incorporated into the design to allow for cables to be fed into position with ease, eliminating the need for drilling or cable retainers.

The trunking is available with a full range of fittings and accessories, including the moulded flat angles and tees, along with the newly designed two-piece adjustable bends to accommodate installations where 90 degree corners are unobtainable. 'Screw fit' fittings are available on request.

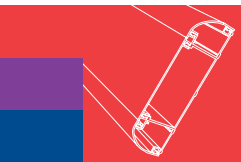
The system has been designed to accommodate up to 50mm socket boxes, complete with large knock-outs, which allows for the use of deeper RJ45 Modules.

An optional pre-punched steel screen divider is available. This spans the width of the trunking and meets the requirements for power and data separation (BSEN50174-2).

ELITE 3 meets and exceeds the requirements for (BS6701), ISO/IEC11801(ED2.0 Amd 2) and Cenelec (BSEN50173 Part 1 / 2, BSEN50174-2) standards.

Please contact our Sales Team for further information on the range.

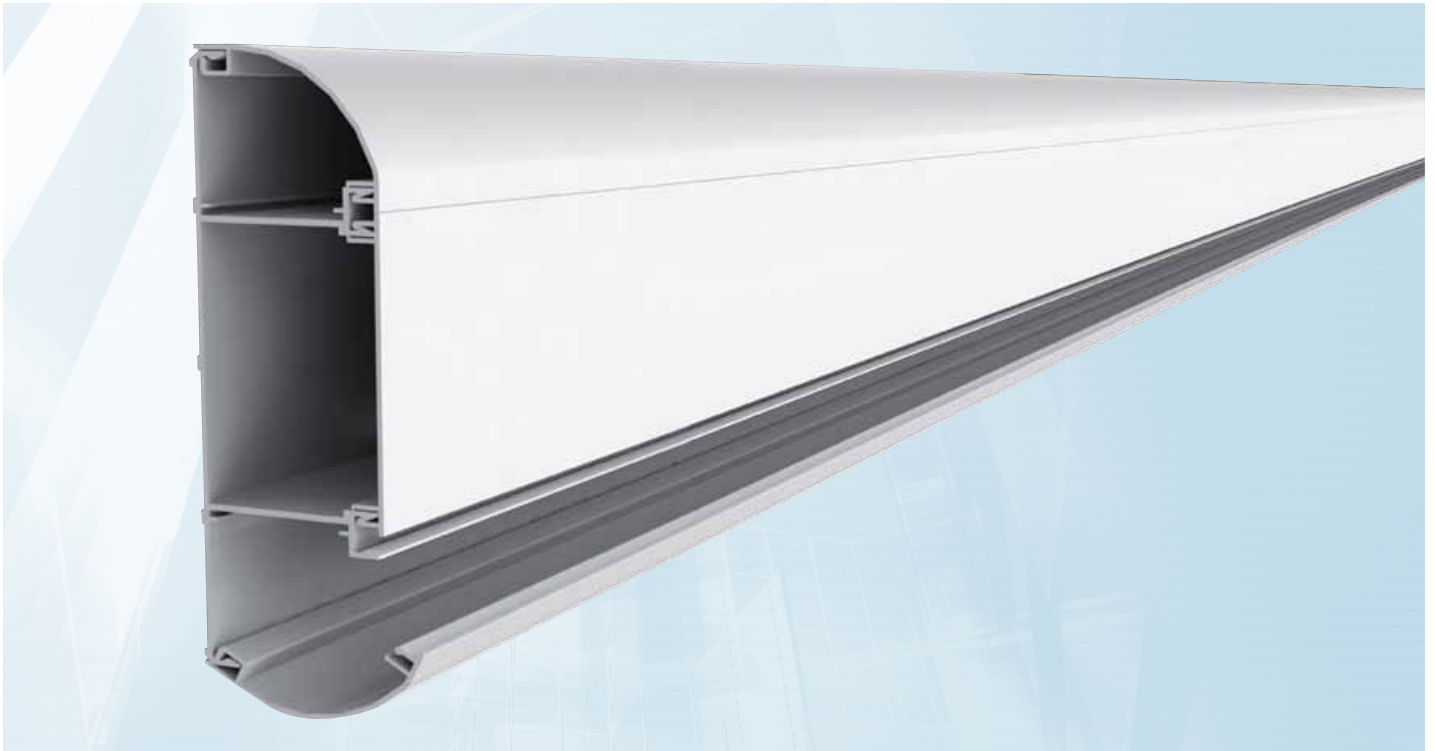
elite
RANGE



ELITE 3 TRUNKING SYSTEM

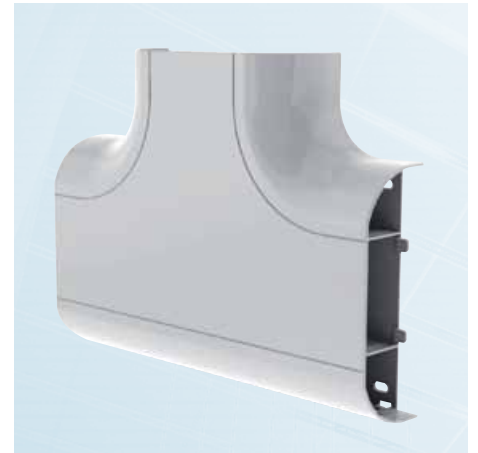
product overview

marco
cablemanagement



KEY DESIGN FEATURES

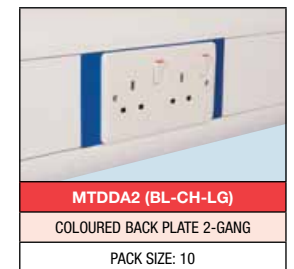
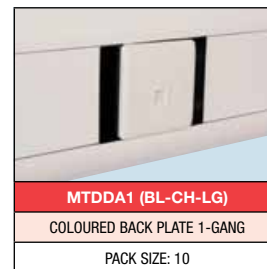
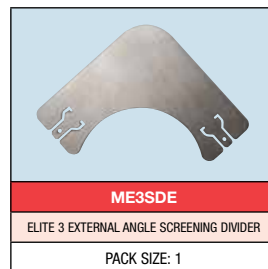
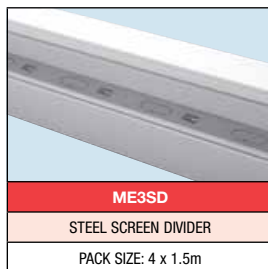
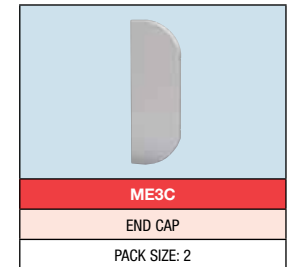
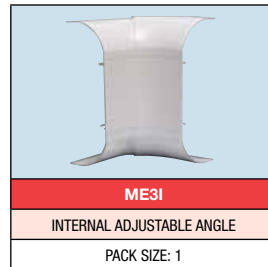
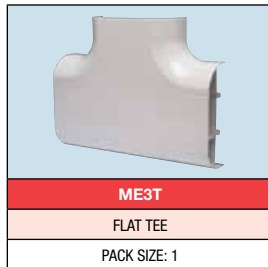
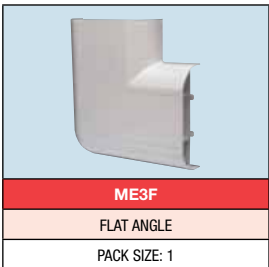
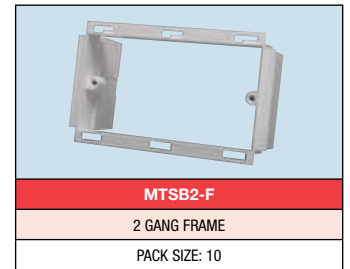
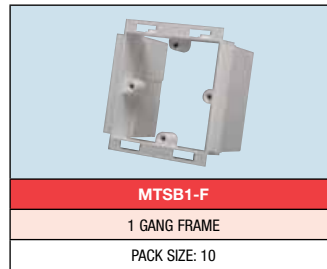
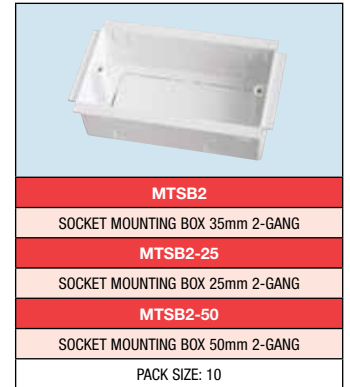
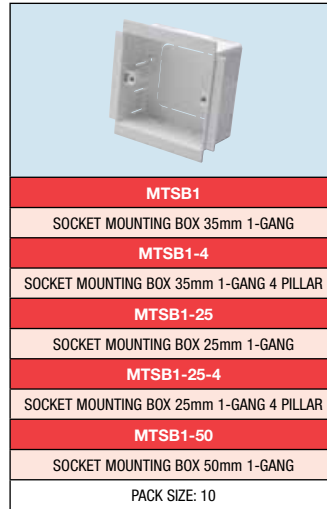
- 175mm x 60mm profile
- Aesthetically pleasing curved design
- Manufactured from high impact resistant uPVC compound
- Suitable for Dado or Skirting mounting either vertically or horizontally
- Hinged lids to support cables during installation
- Pre-punched base
- Large pre-punched knockouts located on both internal walls
- Full range of fittings and accessories
- Attractive two piece adjustable Internal & External covers to accommodate walls that do not have a true 90 degree
- Internal and External Angles maintain necessary bend radius to comply with CAT5E, CAT6, Shielded, CAT7 and CAT6A 10 gig solutions
- Moulded Flat Tee and Flat Angle with data guide to maintain necessary bend radius and cable segregation
- Moulded Flat Tee and Flat Angle overlap trunking to prevent need of additional Joint Covers
- Screw fit fittings available (optional)
- 1 & 2 Gang 50mm boxes with large knock outs
- Pre-Punched Steel Screen Divider (BSEN50174-2)
- DDA Compliancy obtainable
- ROHS Compliant
- ELITE 3 Hygieia Range available – antimicrobial protection
- Available as pre-assembled units



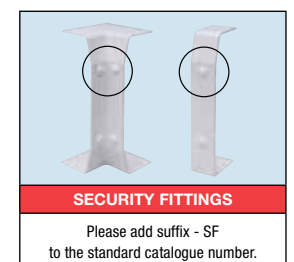
SECURITY FITTINGS AVAILABLE FOR ALL ACCESSORIES

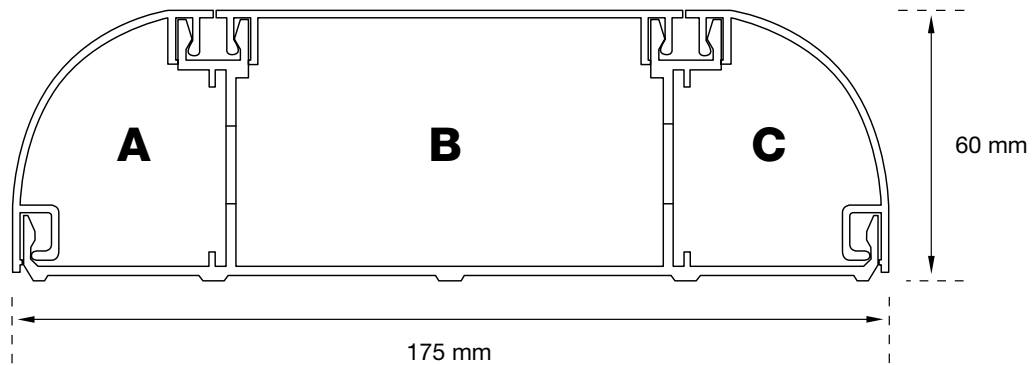
ELITE 3 TRUNKING SYSTEM

accessories



BL-BLUE CH-CHARCOAL LG-LIGHT GREY





Dimensions & Cable Capacities

Data Cable Diameter	Nominal CSA	Compartment A 2070mm ²	Compartment B			Compartment C 2070mm ²
			3590mm ²	3590mm ² & 25mm Box	3590mm ² & 35mm Box	
		45% Fill (928mm ²)	45% Fill (1615mm ²)	45% Fill (813mm ²)	45% Fill (488mm ²)	45% Fill (928mm ²)
5mm	19.6mm ²	47	82	41	24	47
5.5mm	23.8mm ²	38	67	34	20	38
6mm	28.3mm ²	32	57	28	17	32
6.5mm	33.2mm ²	28	48	24	14	28
7mm	38.5mm ²	24	41	21	12	24
8mm	50.3mm ²	18	32	16	9	18
9mm	63.6mm ²	14	25	12	7	14
10mm	78.5mm ²	11	20	10	6	11

Power Cable Conductor CSA	Cable Factor	Compartment A 2070mm ²	Compartment B			Compartment C 2070mm ²
			3590mm ²	3590mm ² & 25mm Box	3590mm ² & 35mm Box	
		45% Fill (928mm ²)	45% Fill (1615mm ²)	45% Fill (813mm ²)	45% Fill (488mm ²)	45% Fill (928mm ²)
1.5mm ²	8.6	107	187	98	61	107
2.5mm ²	12.6	73	126	67	41	73
4mm ²	16.6	55	97	51	31	55
6mm ²	21.2	43	76	40	25	43

Typical cable loading information in line with wiring regulation BS 7671 (45% CSA Fill)

Standards

ELITE 3 trunking system meets and exceeds the requirements for:
BS6701, ISO/IEC11801(ED2.0 Amd 2) and
Cenelec (BSEN50173 Part 1 / 2, BSEN50174-2) BS4678 Pt 4, BS7671 (IEE regs)