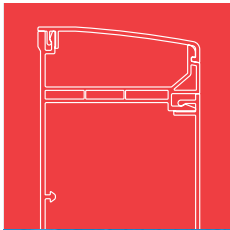


APOLLO 60 TRUNKING SYSTEM



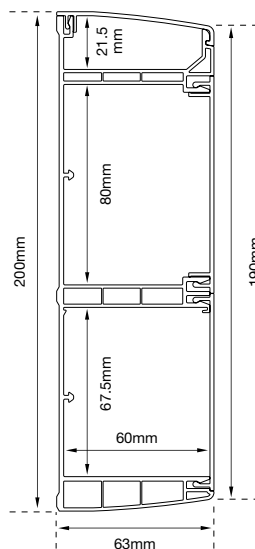
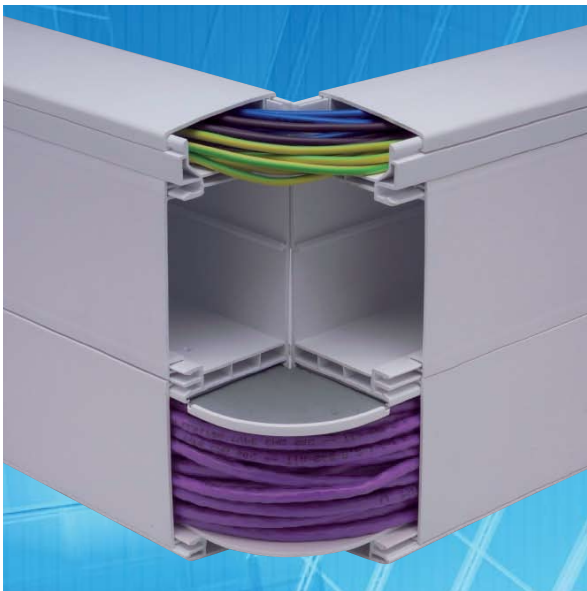
Marco's Apollo 60 trunking system has been designed for use in power and high density structured cabling systems, such as CAT5E, CAT6, CAT7, Shielded and the new CAT6A 10 gig solution.

The Apollo 60's unique top opening lid allows power cables to be installed easily and speedily. Should additional power cable wiring space be required further capacity can be obtained using the optional clip-in divider.

A 50mm minimum bend radius is provided for all Marco Apollo 60 data fittings including flat angles, tees, internal and external angles. All cables can be laid into place avoiding the need to thread cables through apertures, thus ensuring that all of the Marco fittings are easy to install and to wire.

An optional steel screen is available which spans the width of the data compartment. (BSEN50174-2)

Apollo 60 meets and exceeds the requirements for ANSI/TIA/EIA 568B, ISO/IEC 11801(ED 2.0) and Cenelec (BSEN50174-2) standards.



KEY DESIGN FEATURES

The unique top lid clips on easily allowing for fast power cable installation, thus removing the need to insert cables from underneath.

- A shelf can be added to the trunking to allow for additional power cable capacity.
- All lids are rigidly supported and easily snapped into place.
- All bends maintain the strict 50mm radius required for data cables to conform to the necessary standards.
- The data compartment can accommodate over 60 Cat-6 data cables, or over 100 Cat-5e.
- The outlet box compartment can support 25mm, 35mm and the new 50mm deep socket mounting boxes.



PART M DISABILITY ACT (DDA) TRUNKING



All Marco trunking systems are available to meet Part M DDA compliance with either a coloured centre lid, or coloured back plates. Please contact Sales Team for further details.

Back plates are available in a variety of colours.
Please add required suffix: Black – BK Blue – BL Light Grey – LG

Standards

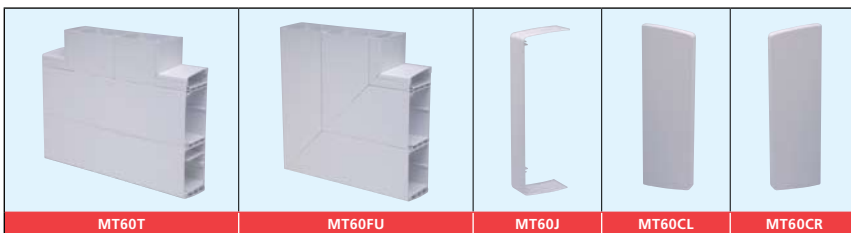
Marco Cable Management trunking systems conform to the following standards:
BS4678 Part 4, BSEN50174-2, BS7671 (17th Edition IEE regs)
BS6701, ANSI/TIA/EIA 568B, ISO IEC 11801 (ED 2.0)

APOLLO 60 TRUNKING SYSTEM

Lifting the Lid on the **Cat-6** Revolution



Marco Apollo 60 Data Trunking



Code No	Description	Pack Size
MT60	Data trunking	2 x 3m
MT60T	Flat tee	1
MT60FU	Flat angle	1
MT60E	External angle	1
MT60I	Internal angle	1
MT60J	Joint cover	5
MT60CL	End cover left hand	2
MT60CR	End cover right hand	2
MT60SD	Screening divider	4 x 2m
MT60SDE	External angle screening divider	1

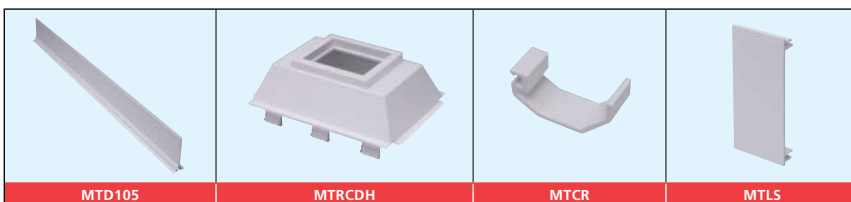


** Internal and external fittings supplied as a two-part kit in order to maintain the required 50mm radius around bends

Universal Items



Code No	Description	Pack Size
MTS1-50	Socket mounting box 50mm 1-gang	10
MTS2-50	Socket mounting box 50mm 2-gang	10
MTSB1	Socket mounting box 35mm 1-gang	10
MTSB1-4	Socket mounting box 35mm 1-gang 4-pillar	10
MTSB2	Socket mounting box 35mm 2-gang	10
MTSB2-25	Socket mounting box 25mm 2-gang	10
MTSB1-25	Socket mounting box 25mm 1-gang	10
MTSB1-25-4	Socket mounting box 25mm 1-gang 4-pillar	10
MTD105	Divider	16 x 1.5m
MTRCDH	RCD/MCB Din rail housing unit	1
MTCR	Cable retainer	10
MTLS	Accessory spacer	10
MTDDA1	Coloured back plate 1-gang	10
MTDDA2	Coloured back plate 2-gang	10



Apollo 60 trunking fabricated fittings can be supplied with steel screening divider ready installed. Please add suffix - SD to the standard catalogue number